



*Luxury Crafted to Perfection*

***Paramount Ritz***

*@ Bannimantap, Mysuru*



# *Paramount Ritz*

## *Features*

- ✓ Spread across 1.6 Acre
- ✓ **84% open space**
- ✓ Single tower with **G+19 floors**
- ✓ 2 levels of basement parking
- ✓ Total of **71 exclusive units**
- ✓ **11 ft** ground-to-ceiling height enhancing spaciousness and natural airflow
- ✓ **100% Vastu-compliant** design
- ✓ Only **4 units per floor** for maximum privacy
- ✓ **No two-unit doors face each other**, enhancing exclusivity and peace



## *Amenities*

# *Paramount Ritz*

- ✓ Grand reception
- ✓ 2 Elevators
- ✓ Walkway all around the building.
- ✓ Designer landscape.
- ✓ Exclusive Rooftop Gym & Swimming pool for Women
- ✓ Exclusive Rooftop Swimming Pool for Men
- ✓ Billiards & TT table.
- ✓ 24/7 Power backup
- ✓ CCTV surveillance.
- ✓ Safe & Vibrant Children's play area

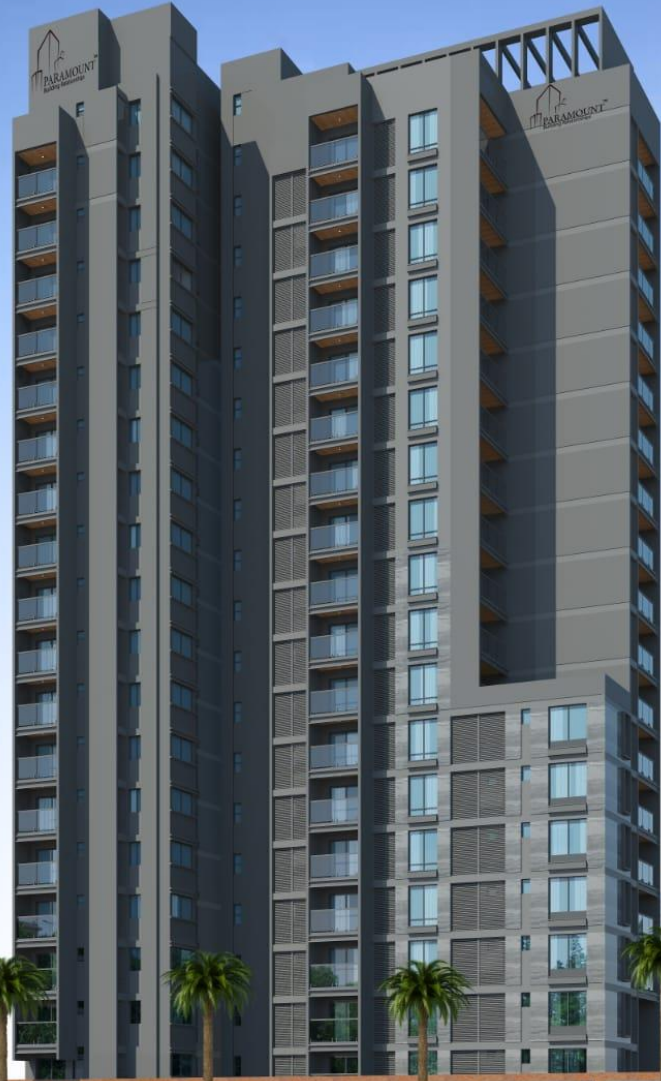


# *Paramount Ritz Elevations*

**PARAMOUNT**<sup>TM</sup>  
Building Relationships







**PARAMOUNT**<sup>TM</sup>  
Building Relationships



**PARAMOUNT**<sup>TM</sup>  
Building Relationships





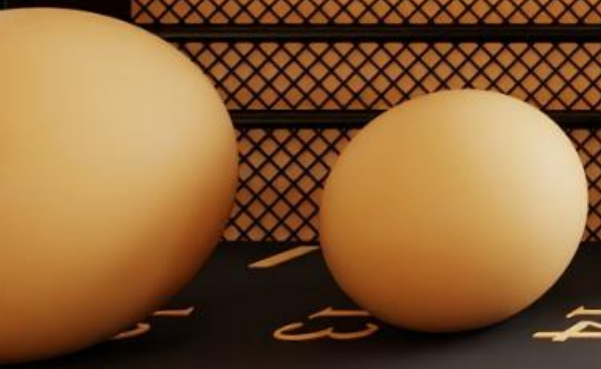
*Grand  
Reception*





# Gym

TRANSFORMATION  
YOURSELF



BE  
THE BEST VERSION  
OF YOURSELF

BELIVE  
IN  
YOUR SELF

BE  
THE BEST VERSION  
OF YOURSELF





ON  
FIT

IRON  
FITNESS

YOURSELF

IRON  
FITNESS

IRON FITNESS

IRON FITNESS



# Club-House



GAMER

GAMER



SNOOKER

P

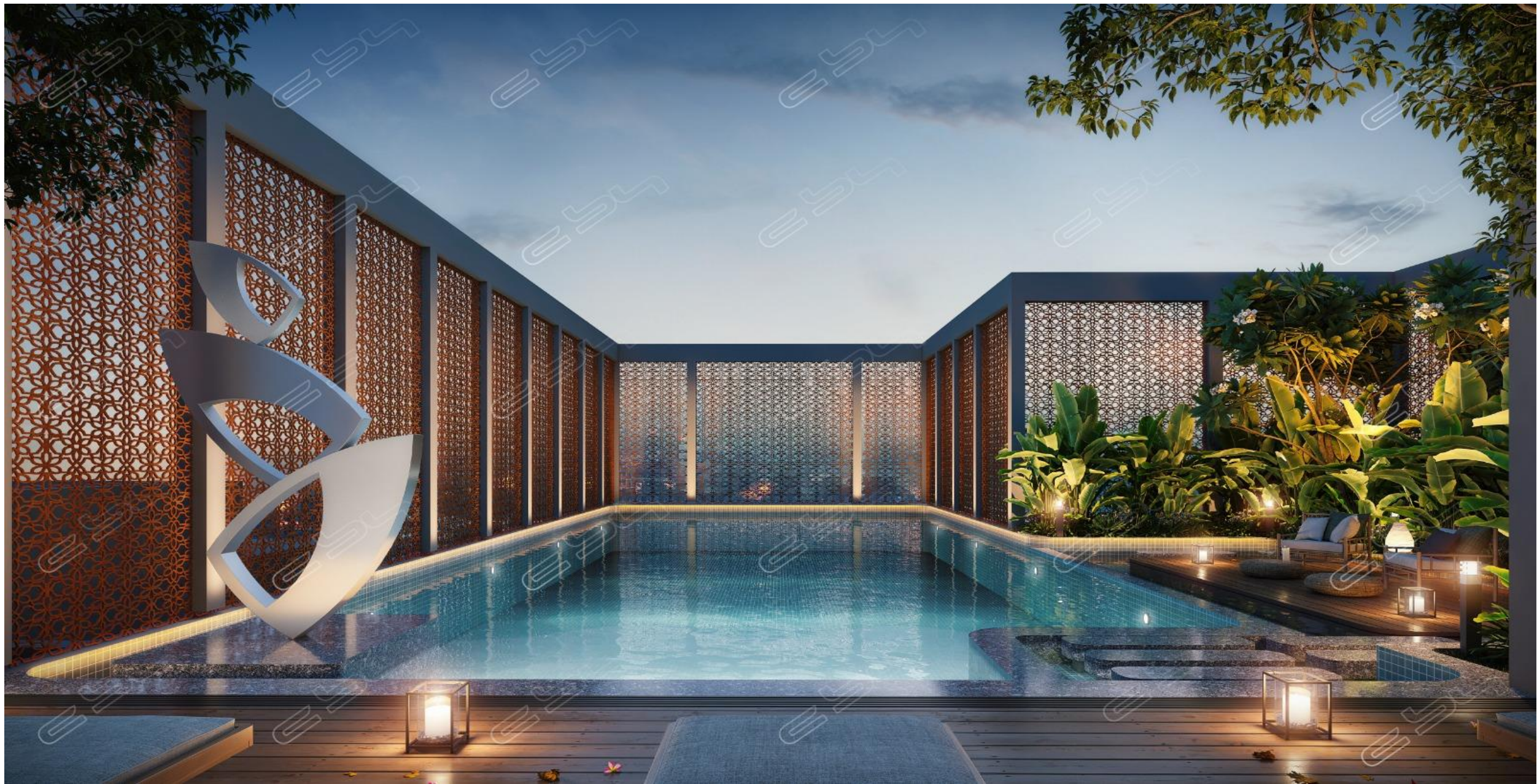


WAKE.  
RUN.  
LIFT.  
TAKE.  
POWER.

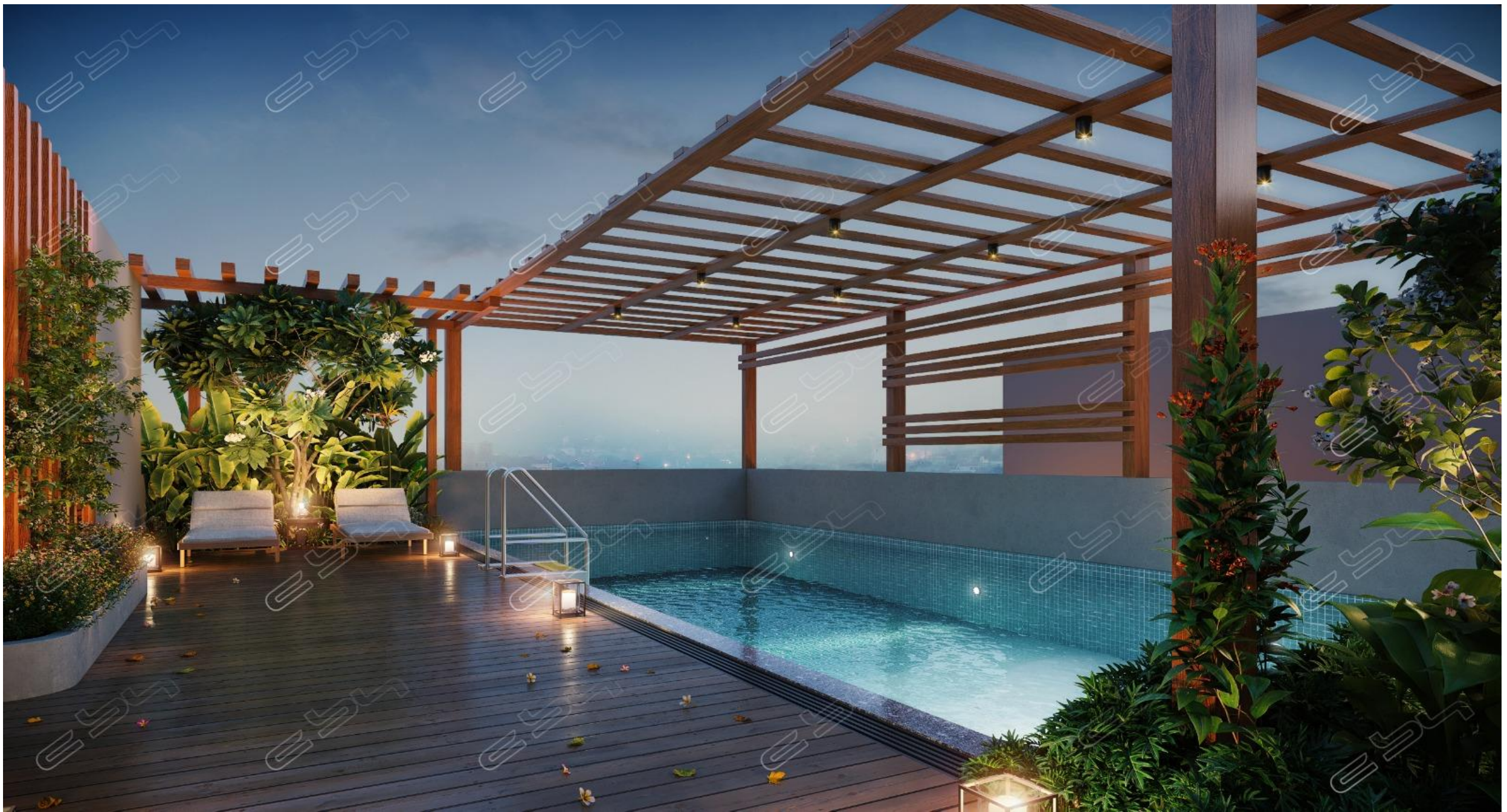
SNOOK



# Swimming Pool



Women-Only  
Swimming Pool



Exclusive Pool For MEN



# Paramount Ritz Floor Plans



1<sup>st</sup> floor plan



2<sup>nd</sup> floor plan



3-7<sup>th</sup> floor plan



8<sup>th</sup> floor plan



9<sup>th</sup>-18<sup>th</sup> floor plan



19<sup>th</sup> floor plan



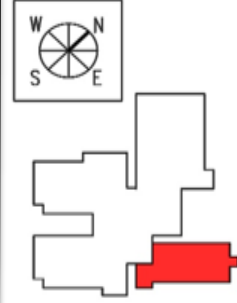
# Individual Floor Plans



Unit : 101  
 Unit Type : 2 BHK  
 Super Built-up Area: 1588 Sqft



KEY PLAN.



Unit Facing:  
SOUTH

101	201
301	401
501	601
701	801
901	1001
1101	1201
1301	1401
1501	1601
1701	1801
1901	



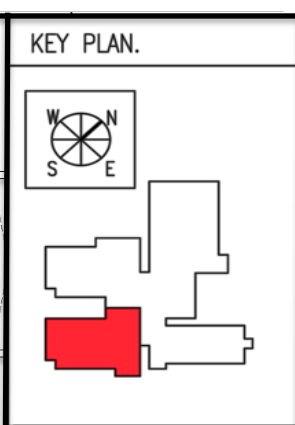
Paramount- RITZ

@Bannimantapa..  
MYSURU..

Series 1



Unit : 202  
 Unit Type : 3 BHK + Maid  
 Super Built-up Area: 2850 Sqft



Unit Facing:  
NORTH

202	302
402	502
602	702
802	902
1002	1102
1202	1302
1402	1502
1602	1702
1802	

Paramount- RITZ  
 @Bannimantapa..  
 MYSURU..



Series 2

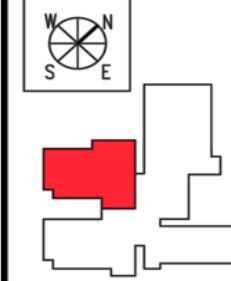


Unit : 203

Unit Type : 3 BHK + Maid  
Super Built-up Area: 2932  
Sqft



KEY PLAN.



Unit Facing:  
NORTH

203	303
403	503
603	703
803	903
1003	1103
1203	1303
1403	1503
1603	1703
1803	



Paramount- RITZ

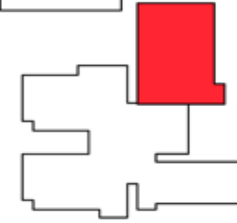
@Bannimantapa..  
MYSURU..

Series 3

Unit : 204  
 Unit Type : 4 BHK + Maid  
 Super Built-up Area: 3732 Sqft



KEY PLAN.



Unit Facing:  
EAST

102

204

304

404

504

604

704

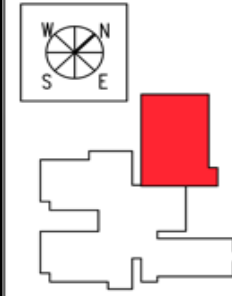


Unit : 804

Unit Type : 3 BHK + Maid+ Terrace  
 Super Built-up Area: 3732 Sqft



KEY PLAN.



Unit Facing:  
EAST

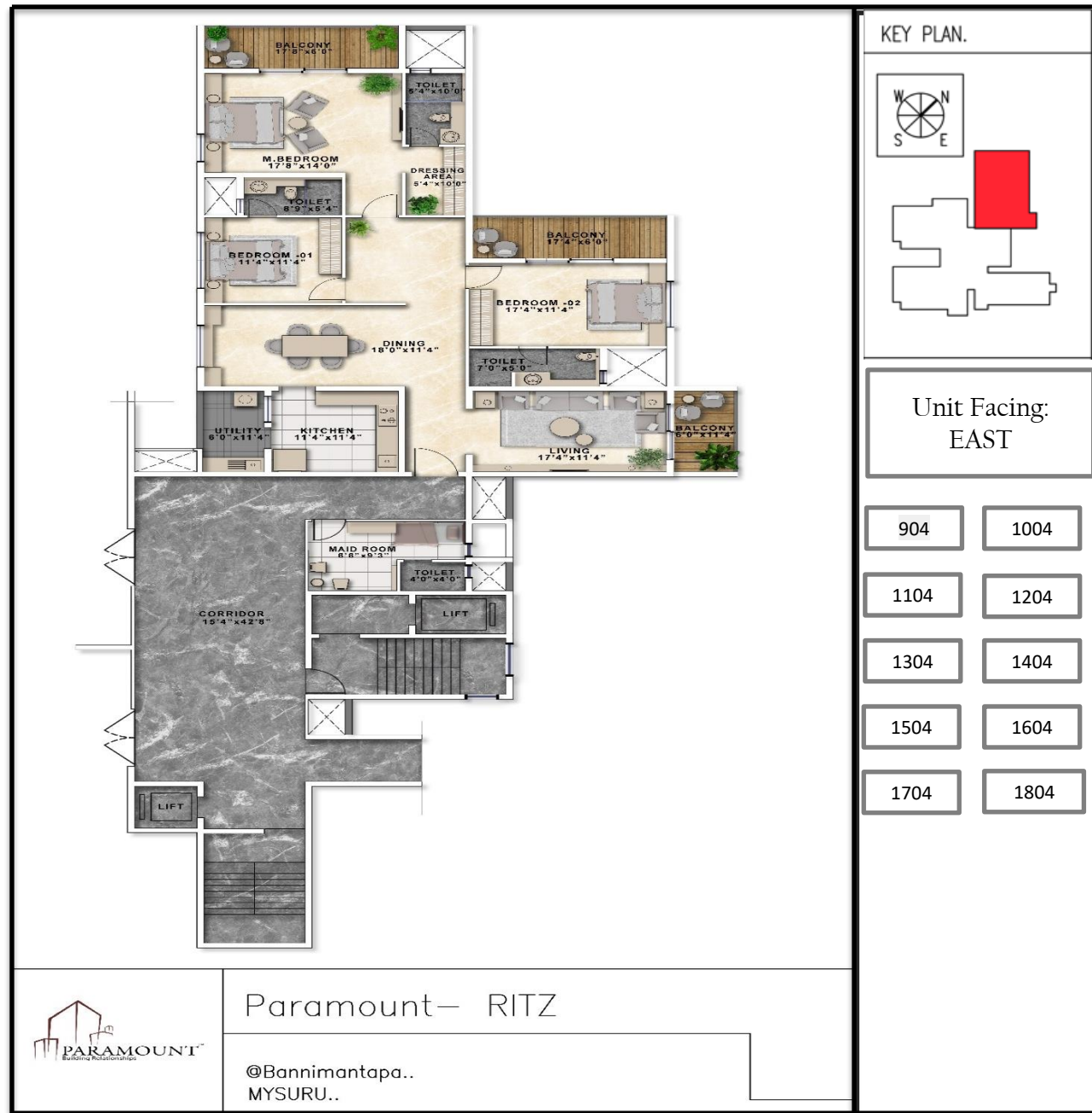
804



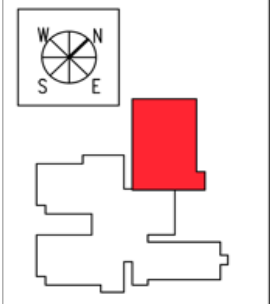
Paramount- RITZ

©Bannimantapa..  
MYSURU..

8<sup>th</sup> Floor with Terrace



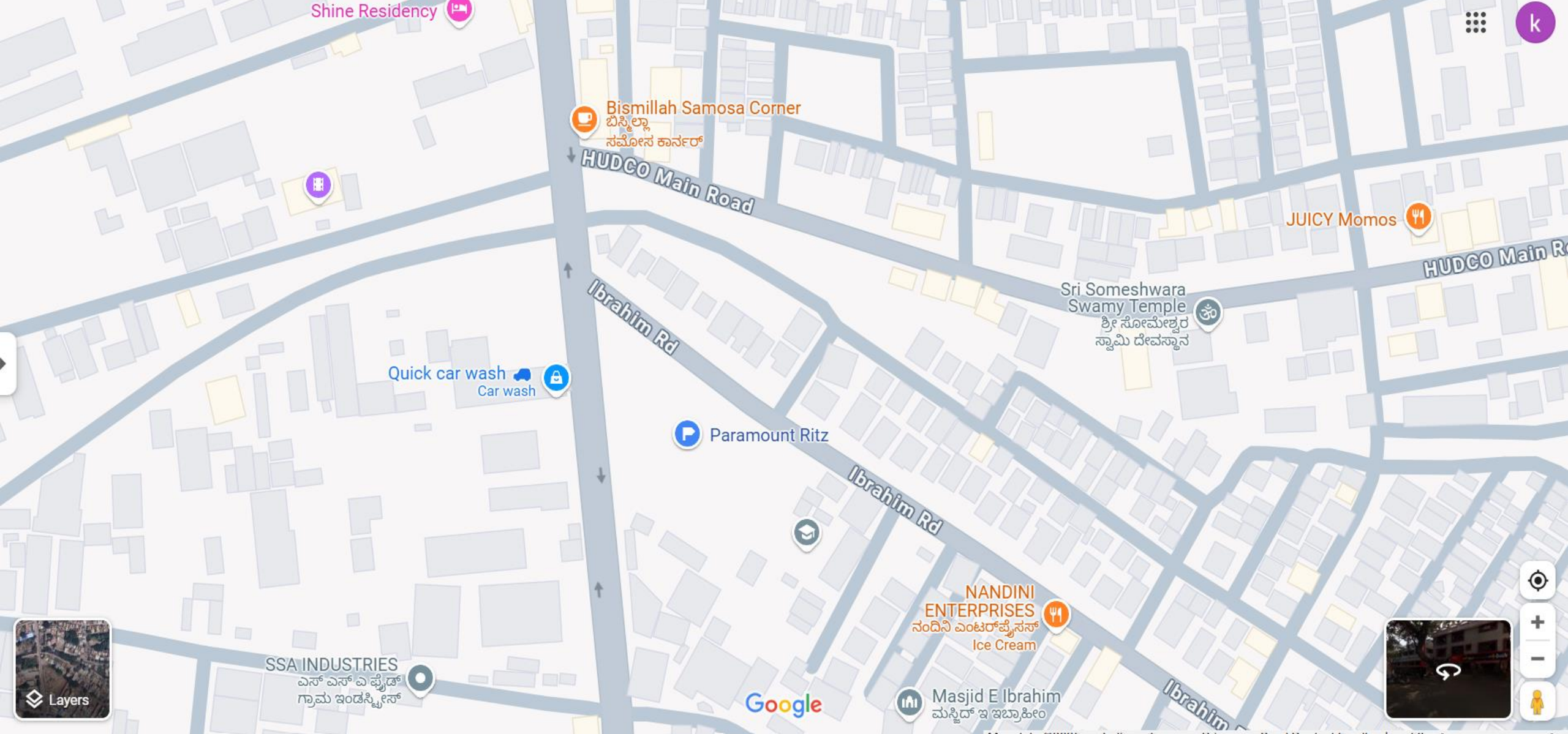
KEY PLAN.



Unit Facing:  
EAST

904	1004
1104	1204
1304	1404
1504	1604
1704	1804

Unit : 904  
Unit Type : 3 BHK + Maid  
Super Built-up Area: 3108 Sqft



# Location

Ibrahim Road, Bannimantap,  
Mysore



## You can reach us at

Address: 2902/1 2<sup>nd</sup> Floor, Temple Rd, Vani Vilas Mohalla, Mysuru,  
Karnataka 570002

Office Hours: Monday to Saturday 10 AM-6.30 PM

Mob: 9353-971-972 | 9740-197-197

Website: [www.paramountconstructions.in](http://www.paramountconstructions.in)

*Thank You*